

Stonehue Shopping Center

20323 Huebner Rd, San Antonio, TX 78258



Space Available:

- 1,641 SF

Features:

- Located in the heart of Stone Oak - east of the Stone Oak & Huebner intersection
- Great traffic counts
- Strong retail project in North Central San Antonio

Traffic Counts

- Stone Oak Pkwy N. of Huebner: 25,984 VPD
- Huebner W. of Stone Oak Pkwy: 17,617 VPD

Demographics	1 mile	3 mile	5 mile
Total Population	12,326	74,385	185,480
Total Households	4,642	27,949	71,754
Avg HH Income	\$108,642	\$127,417	\$120,926
Population Growth 2019-24	9.58%	7.93%	7.97%

Area Retailers:



Walgreens

WELLS
FARGO



10003 NW Military Hwy, Suite #2205
San Antonio, TX 78231

t 210.593.0777
f 210.593.0780

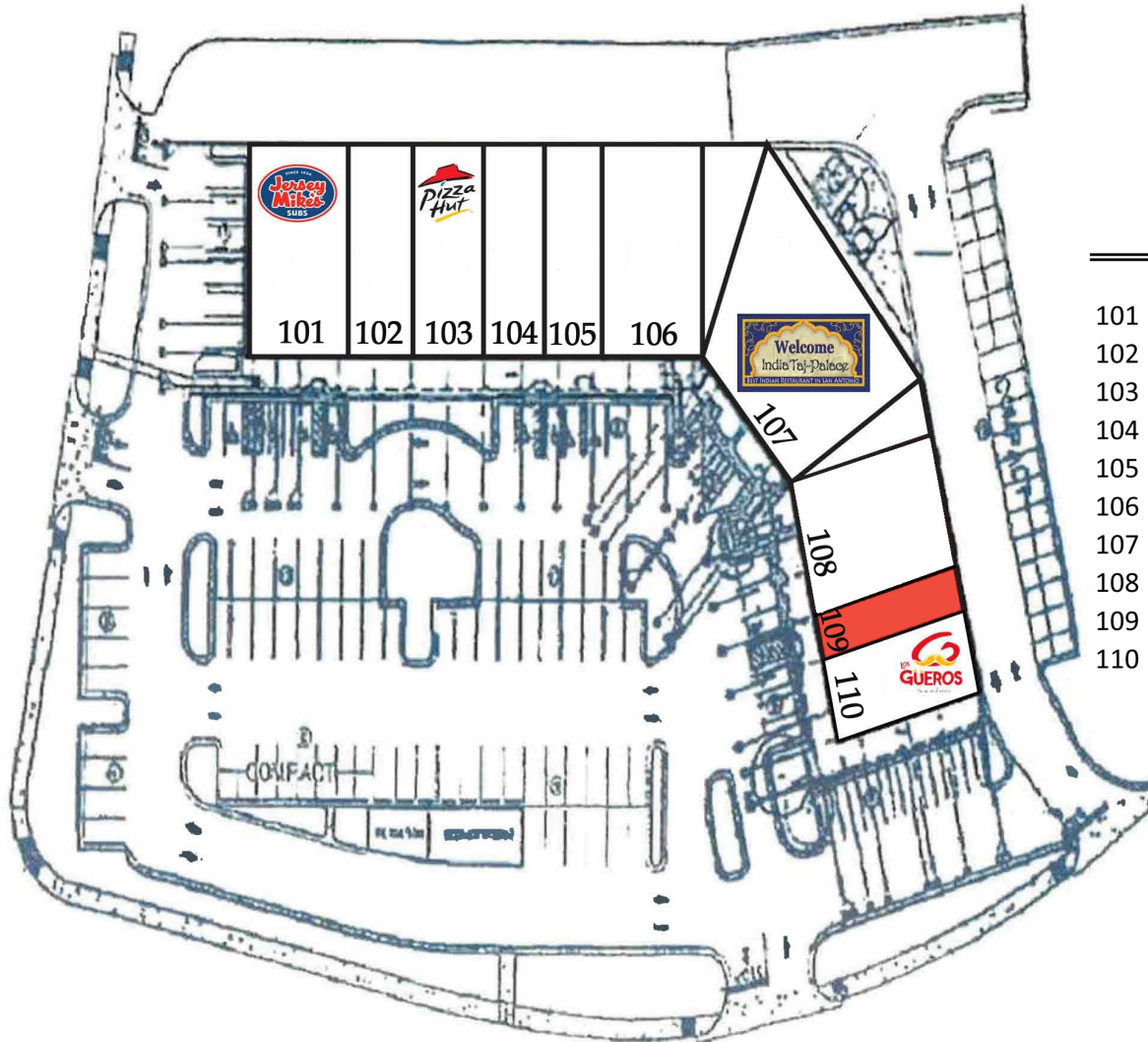
www.fulcrumsa.com

Marcus Shaffer
210.317.5563
marcus@fulcrumsa.com

fulcrum
PROPERTY GROUP INC

Stonehue Shopping Center

Site Plan

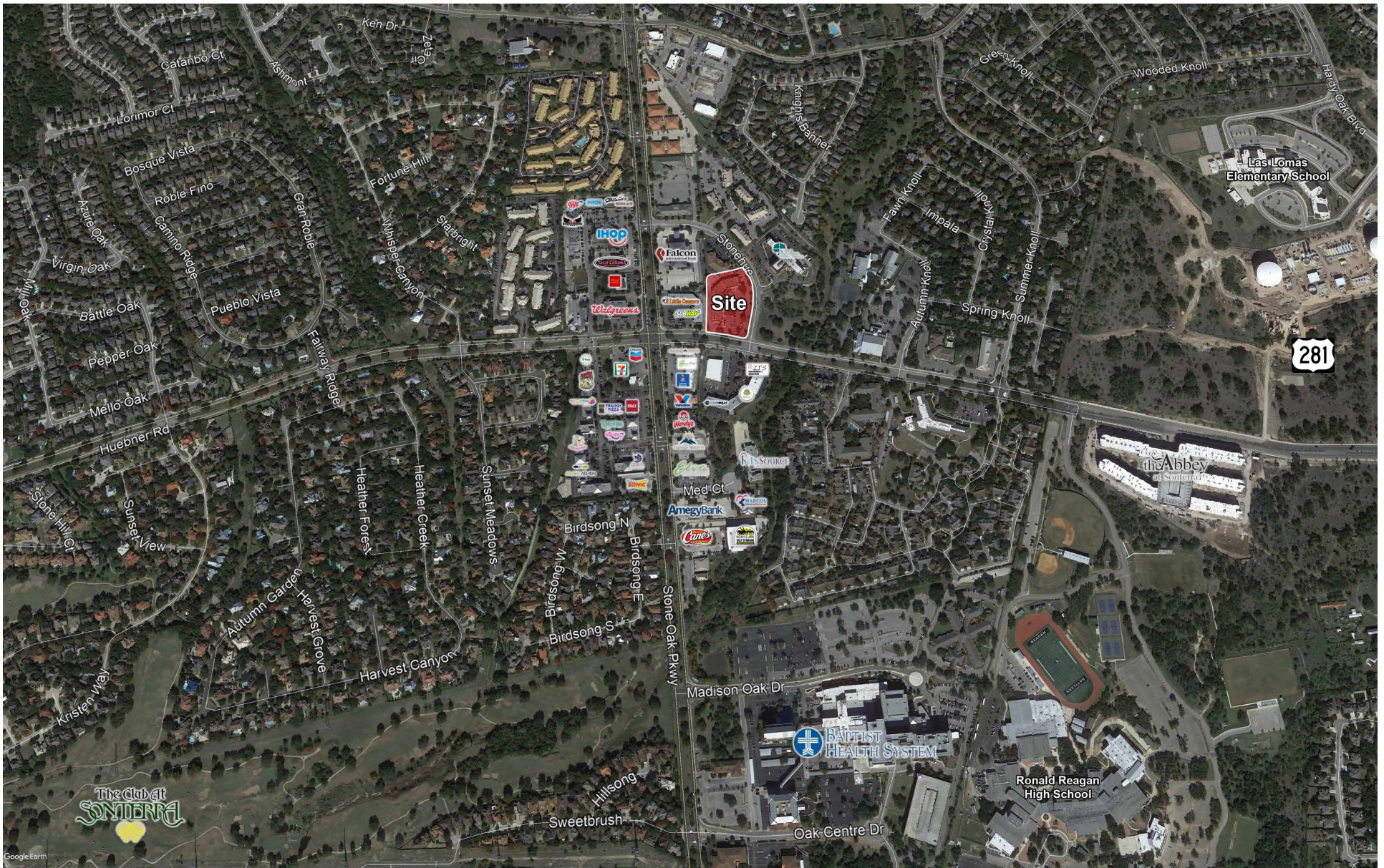


Current Tenants

101	Jersey Mike's	1,816 SF
102	Austin Driving School	1,542 SF
103	Pizza Hut	1,800 SF
104	Phase 4 Physiotherapy	1,500 SF
105	Studio 55	1,500 SF
106	Indo Pak Grocery	3,297 SF
107	India Taj Palace	4,376 SF
108	Region 3 Fitness	2,100 SF
109	Available	1,641 SF
110	Guero's Mexican Restaurant	1,542 SF

Stonehue Shopping Center

Location Aerial



10003 NW Military Hwy, Suite #2205
San Antonio, TX 78231

t 210.593.0777
f 210.593.0780

www.fulcrumsa.com

Marcus Shaffer
210.317.5563
marcus@fulcrumsa.com

fulcrum
PROPERTY GROUP INC