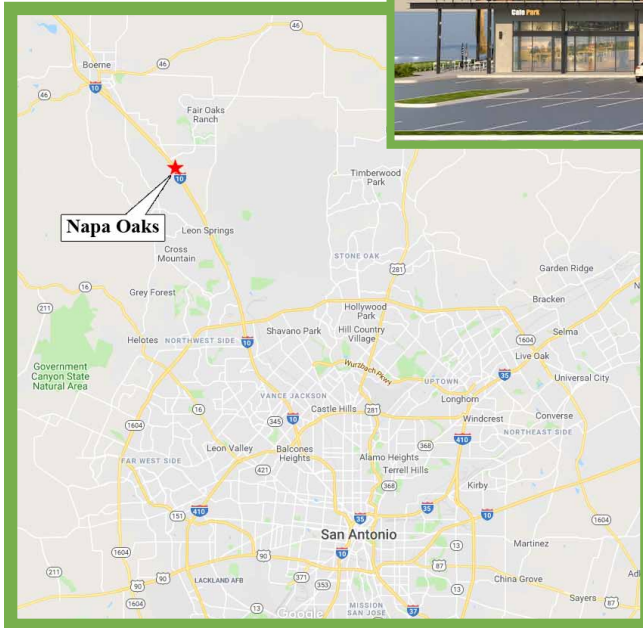


# Napa Oaks

Available 4<sup>th</sup> Quarter 2021

I-10 and Starr Ranch



## Availability:

- Retail/Restaurant/Office Space
- 47,500 Square Feet On Two Floors
  - Level One: +/- 23,750 SF
  - Level Two: +/- 23,750 SF

Area Retailers:



Demographics	3 mile	5 mile	10 mile
Population	23,616	40,742	118,292
5 year Projected Growth	19.39%	18.8%	16.15%
Avg HH Income	\$162,889	\$163,130	\$140,339

10003 NW Military Hwy, Suite #2205  
San Antonio, TX 78231

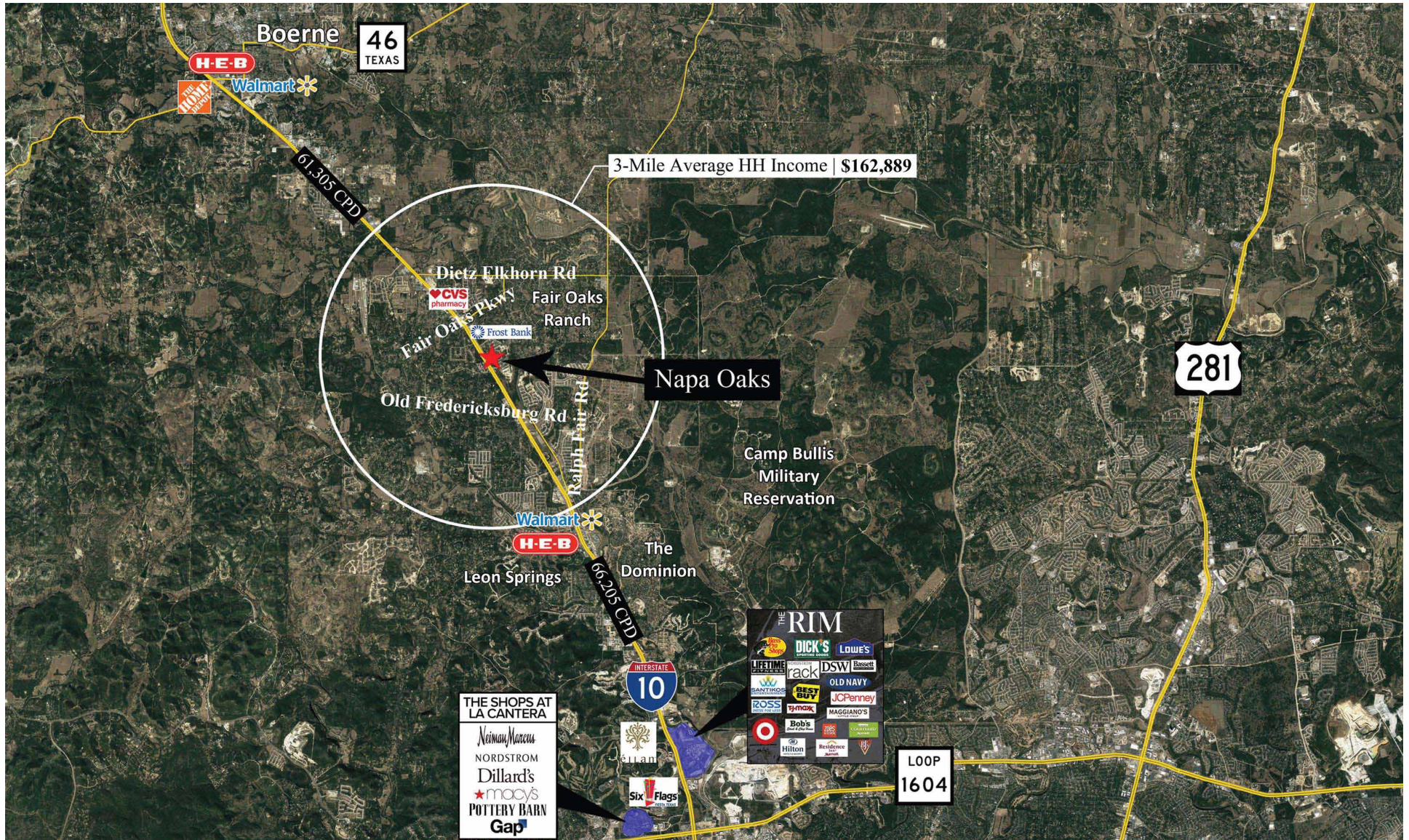
t 210.593.0777  
f 210.593.0780

www.fulcrumsa.com



# Napa Oaks

## Trade Area Aerial

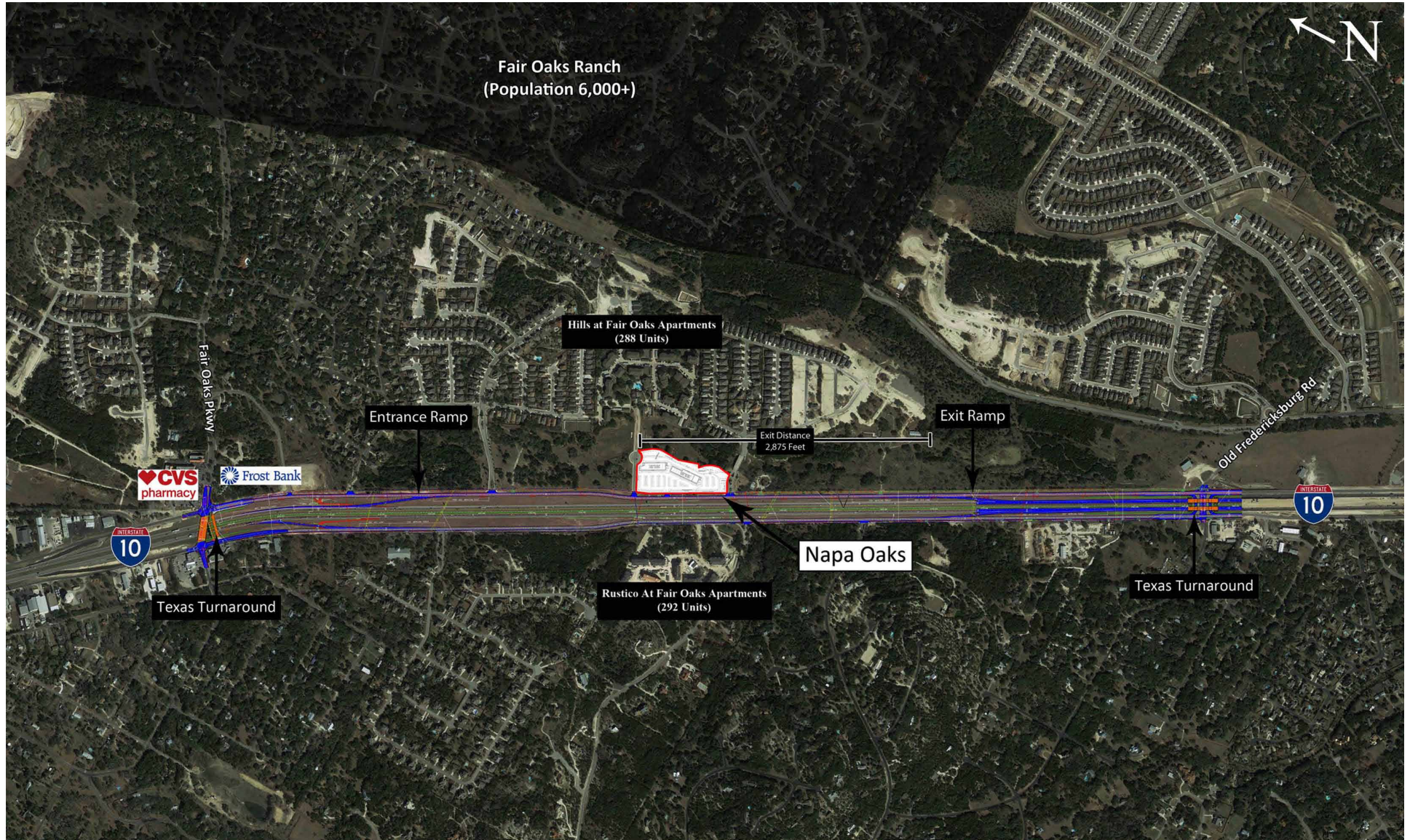


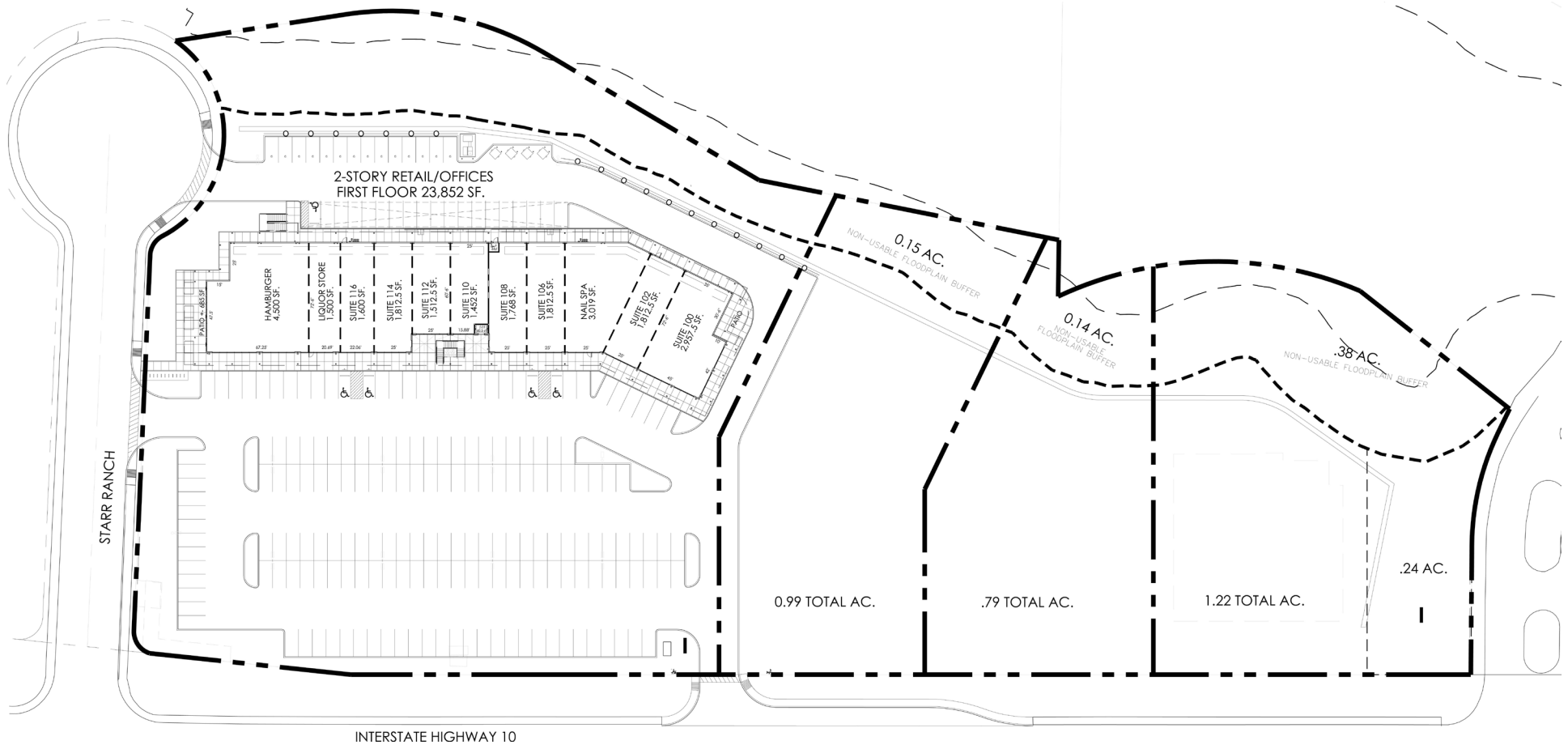
10003 NW Military Hwy, Suite #2205  
San Antonio, TX 78231

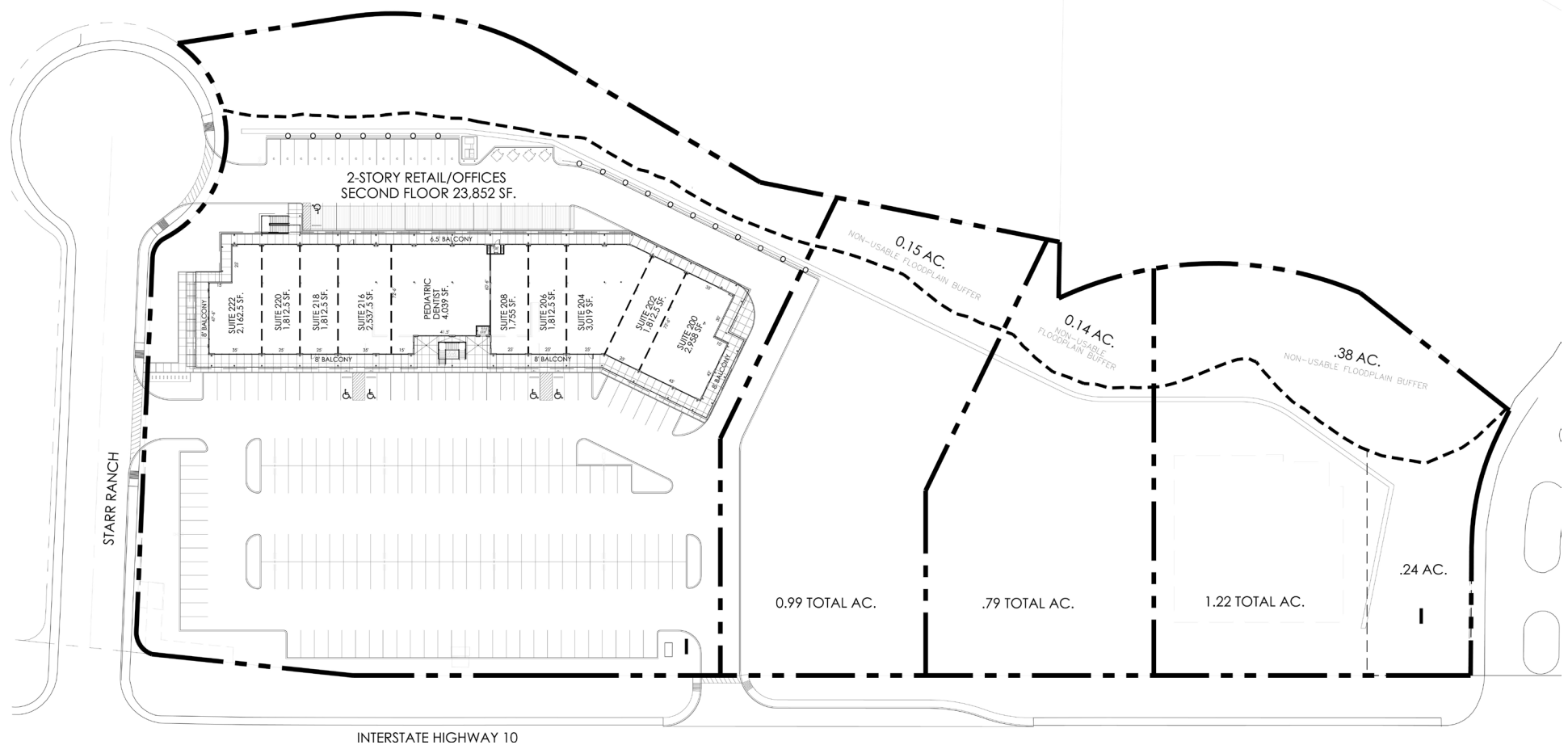
t 210.593.0777  
f 210.593.0780

[www.fulcrumsa.com](http://www.fulcrumsa.com)

**fulcrum**  
DEVELOPMENT







# Napa Oaks

---



---

10003 NW Military Hwy, Suite #2205  
San Antonio, TX 78231

t 210.593.0777  
f 210.593.0780

[www.fulcrumsa.com](http://www.fulcrumsa.com)



# Napa Oaks

---



---

10003 NW Military Hwy, Suite #2205  
San Antonio, TX 78231

t 210.593.0777  
f 210.593.0780

[www.fulcrumsa.com](http://www.fulcrumsa.com)

**fulcrum**  
DEVELOPMENT

# Napa Oaks

---



---

10003 NW Military Hwy, Suite #2205  
San Antonio, TX 78231

t 210.593.0777  
f 210.593.0780

[www.fulcrumsa.com](http://www.fulcrumsa.com)



# Napa Oaks

---



---

10003 NW Military Hwy, Suite #2205  
San Antonio, TX 78231

t 210.593.0777  
f 210.593.0780

[www.fulcrumsa.com](http://www.fulcrumsa.com)

**fulcrum**  
DEVELOPMENT

