

Gateway

New Mixed-Use Development in the Medical Center

Wurzbach Rd. & Fredericksburg Rd.
San Antonio, Texas

Gateway is an innovative 7 acre mixed-use development that will bring a range of amenities and services to the San Antonio Medical Center and the surrounding community.



Opening Spring 2020



10003 NW Military Hwy, Suite #2205
San Antonio, TX 78231

t 210.593.0777
f 210.593.0780

www.fulcrumsa.com

fulcrum
DEVELOPMENT

Highlights:

- 64,000 square feet on 3 Floors
 - Level One: +/- 19,850 SF Medical Services
 - Level Two: +/- 24,000 SF Restaurants & Retail
 - Level Three: +/- 19,240 SF Medical Offices
- Easy access to both Wurzbach Rd and Fredericksburg Rd
- Quality architectural finishes
- Abundant surface parking for patients and customers

Traffic Counts:

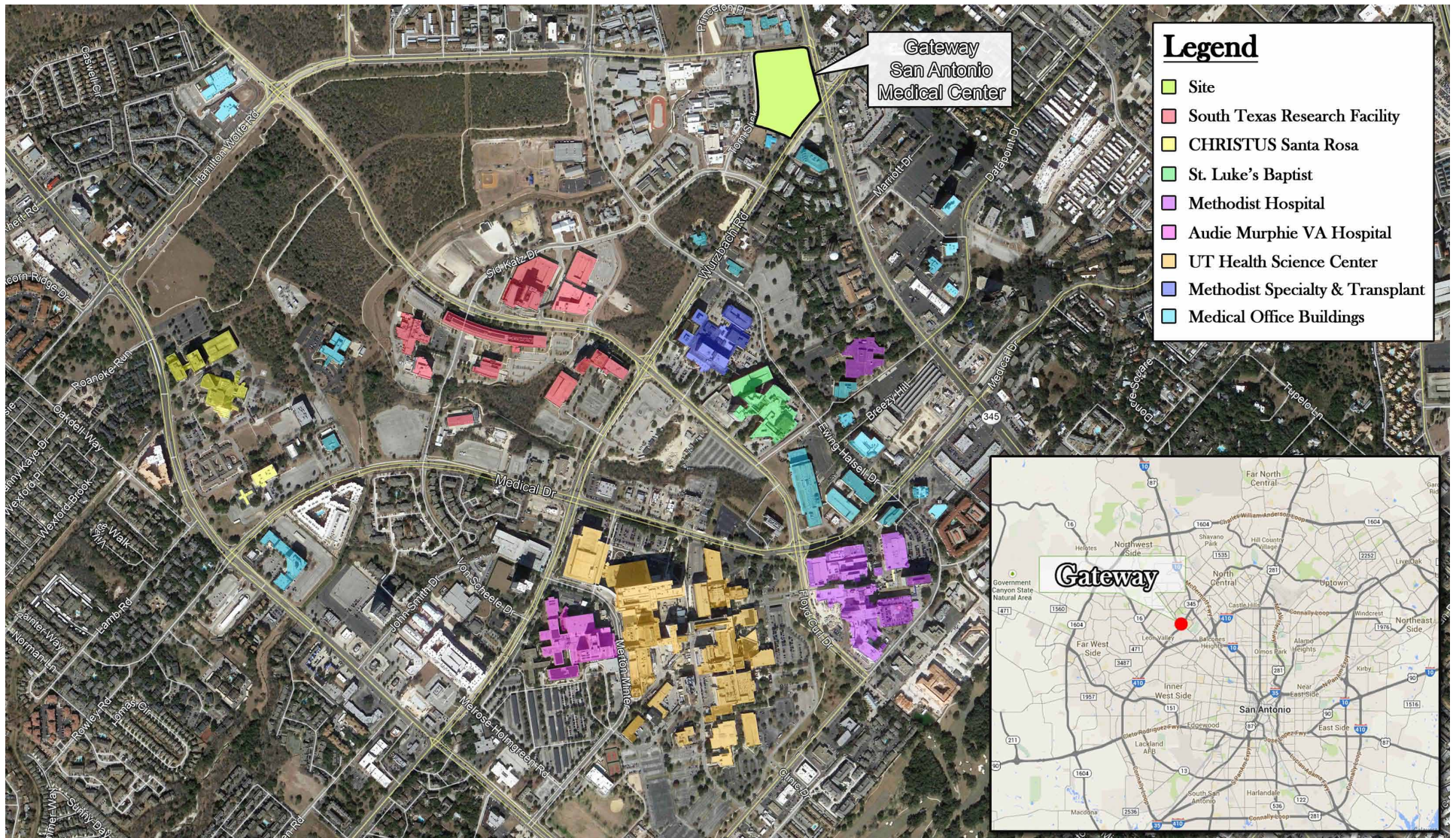
- Fredericksburg - 30,098
- Wurzbach - 24,673



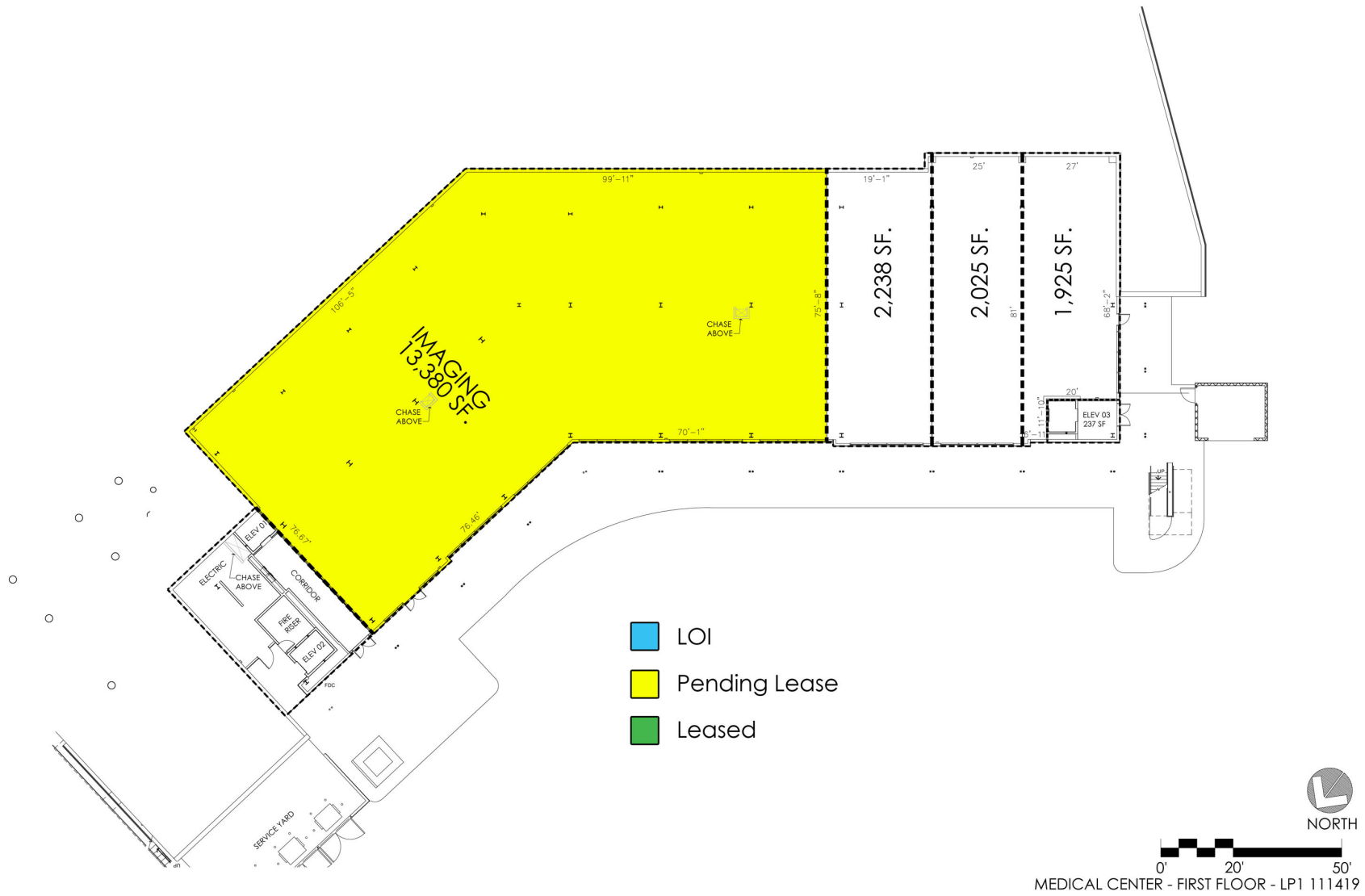
8435 Wurzbach is located at the gateway to the South Texas Medical Center.

South Texas Medical Center Key Figures:

- Annual Patient Visits: 5,750,000
- Total Employment: 30,000
- UT Health Science Center:
 - Students - 3,250
 - Faculty - 1,730
 - Workforce - 5,400
- Medically related institutions: 75
- Clinics: 45
- Major Hospitals: 12









MEDICAL CENTER - SECOND FLOOR - LP1 021820



- LOI
- Pending Lease
- Leased

