

Landmark Centre

Land Parcels

Southeast Corner IH-10 West & Loop 1604



Pad Sites Available
San Antonio, Texas

10003 NW Military Hwy, Suite #2205
San Antonio, TX 78231

t 210.593.0777
f 210.593.0780

www.fulcrumsa.com

fulcrum
DEVELOPMENT

Landmark Centre

Aerial of North San Antonio



10003 NW Military Hwy, Suite #2205
San Antonio, TX 78231

t 210.593.0777
f 210.593.0780

www.fulcrumsa.com

fulcrum
DEVELOPMENT

Landmark Centre

Pad Sites



Availability

- Tract #1 +/- 2.6 Acres
- Tract #2 - +/- 1.5 Acres
- Tract #3 - 1.0 Acre
- Tract #4 - 4.37 Acres
- Tract #5 - +/- 6 Acres
- Tract #6 - .4 Acres

Overview

- Located at the southeast corner of IH-10 and Loop 1604
- Join Pappadeaux, Cheddars, Chuy's & Pluckers
- Area Retailers: Target, Nieman Marcus, Nordstrom, Lowe's, Bass Pro Shop, Best Buy, Homegood/TJMaxx, Best Buy
- Close proximity to Shops at La Cantera, The Rim, University of Texas at San Antonio, Valero Corporation Campus, Security Service Corporate Campus
- Call for pricing

Demographics

	3 Miles	5 Miles	7 Miles
2019 Population	30,148	103,334	198,327
Average HH Income	\$69,555	\$62,336	\$57,869
Daytime Population	19,838	75,086	172,296

Landmark Centre

Aerial



10003 NW Military Hwy, Suite #2205
San Antonio, TX 78231

t 210.593.0777
f 210.593.0780

www.fulcrumsa.com

fulcrum
DEVELOPMENT

Landmark Centre

Aerial



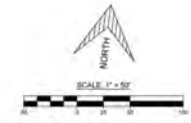
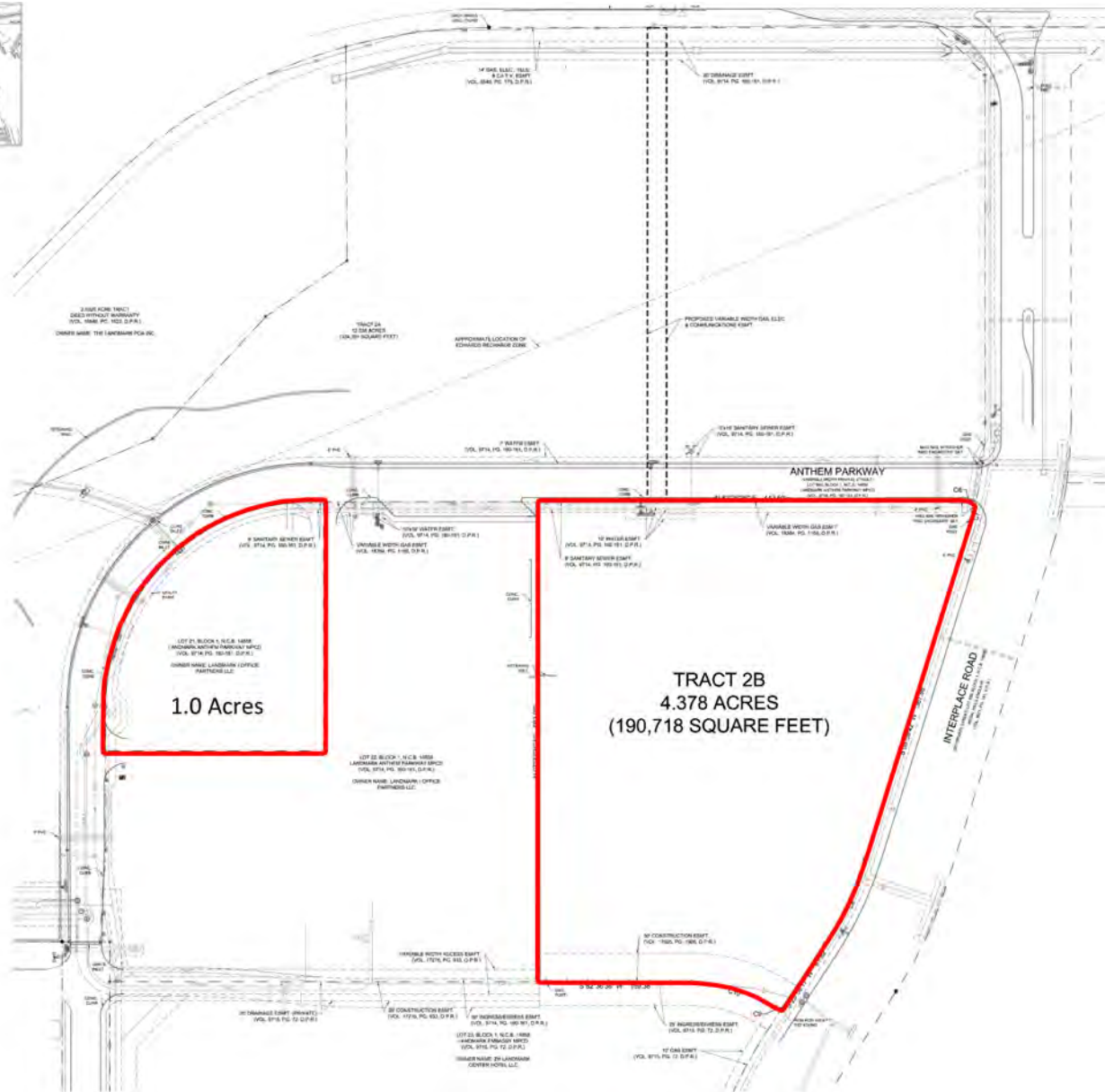
10003 NW Military Hwy, Suite #2205
San Antonio, TX 78231

t 210.593.0777
f 210.593.0780

www.fulcrumsa.com

fulcrum
DEVELOPMENT

Landmark Centre



Landmark Centre



10003 NW Military Hwy, Suite #2205
San Antonio, TX 78231

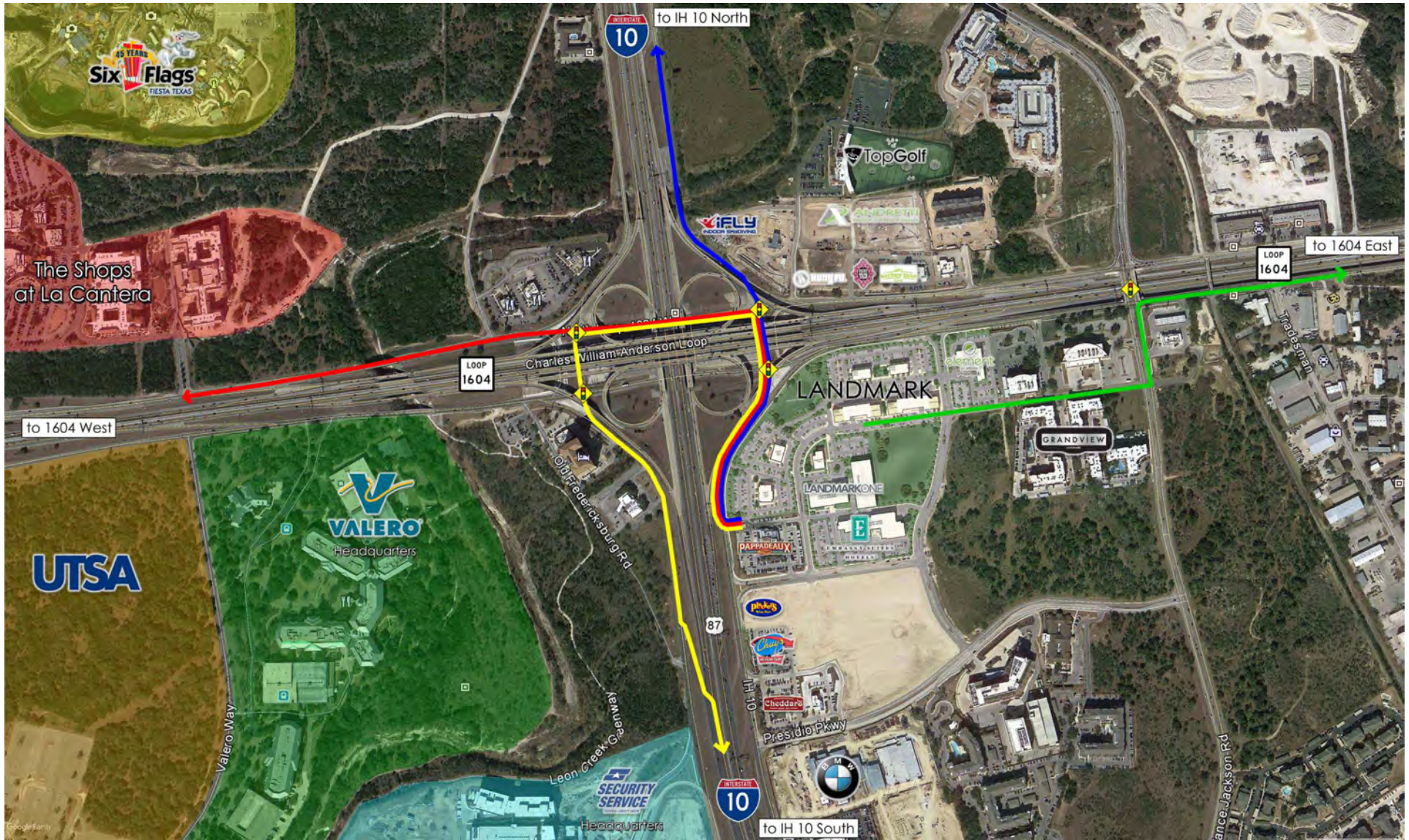
t 210.593.0777
f 210.593.0780

www.fulcrumsa.com

fulcrum
DEVELOPMENT

Landmark Centre

Egress Aerial



10003 NW Military Hwy, Suite #2205
San Antonio, TX 78231

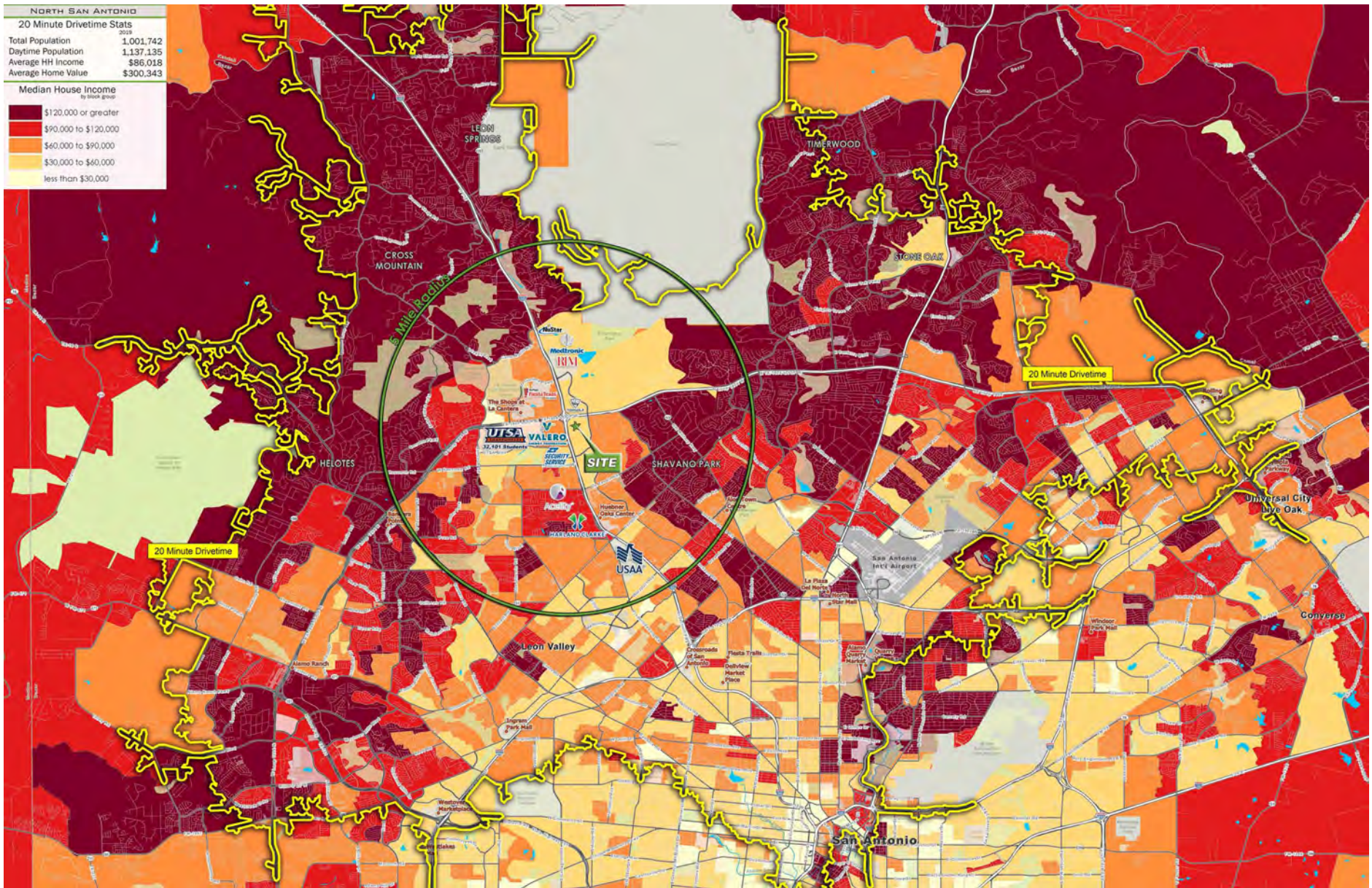
t 210.593.0777
f 210.593.0780

www.fulcrumsa.com

fulcrum
DEVELOPMENT

Landmark Centre

20 Minutes Drive Time - Heat Map



10003 NW Military Hwy, Suite #2205
San Antonio, TX 78231

t 210.593.0777
f 210.593.0780

www.fulcrumsa.com

fulcrum
DEVELOPMENT