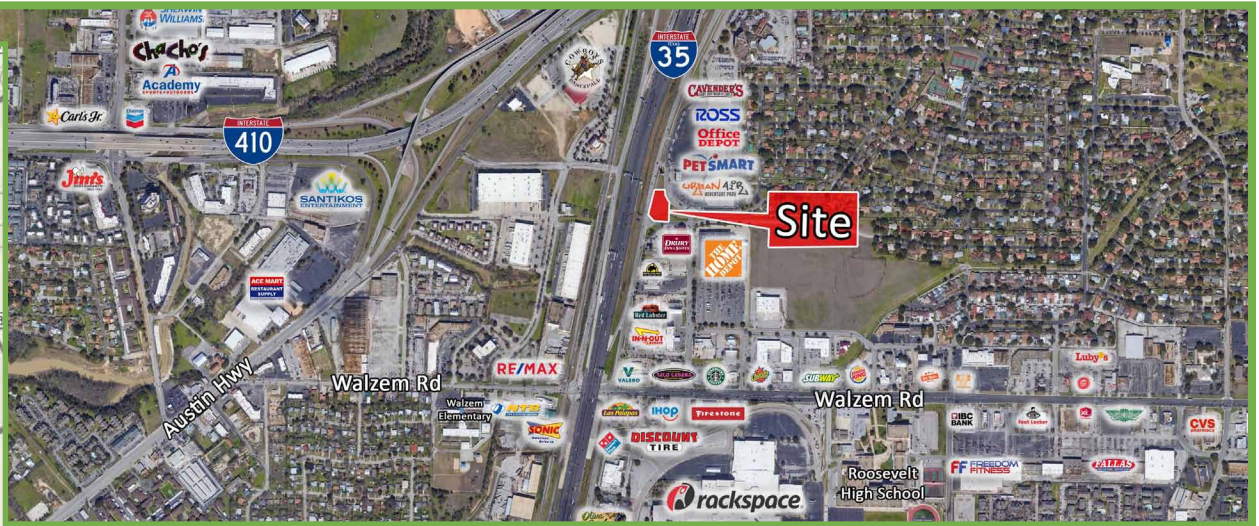
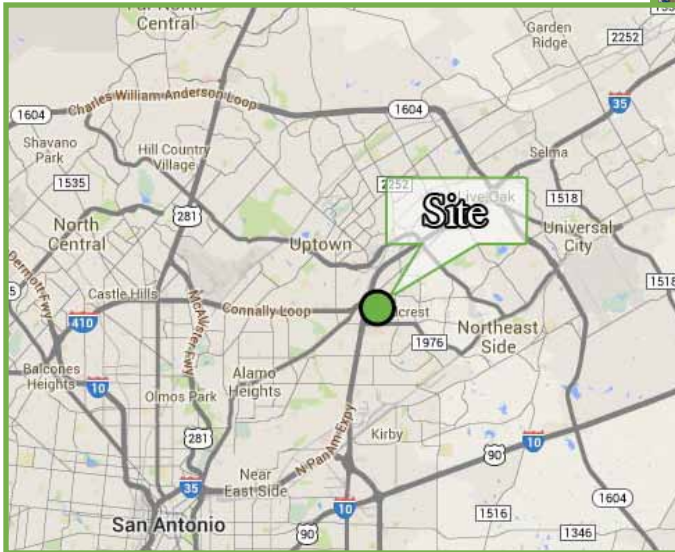


0.756 Acres Available

NEC IH-35 & Crestwind Drive, San Antonio, TX 78239



Size Available

- 0.756 Acres of land for lease or build-to-suit

Features:

- Fast food row
- High traffic area
- Full access on IH-35 access road

Traffic Counts

- IH-35 North of Walzem Road: 202,556 VPD
- IH-35 South of Walzem Road: 194,518 VPD

Demographics	1 mile	3 mile	5 mile
Total Population	8,205	100,691	282,636
Total Households	3,138	39,654	104,948
Avg HH Income	\$61,567	\$62,964	\$75,170
Population Growth 2019-24	2.78%	5.85%	5.76%

Area Retailers:



10003 NW Military Hwy, Suite #2205
San Antonio, TX 78231

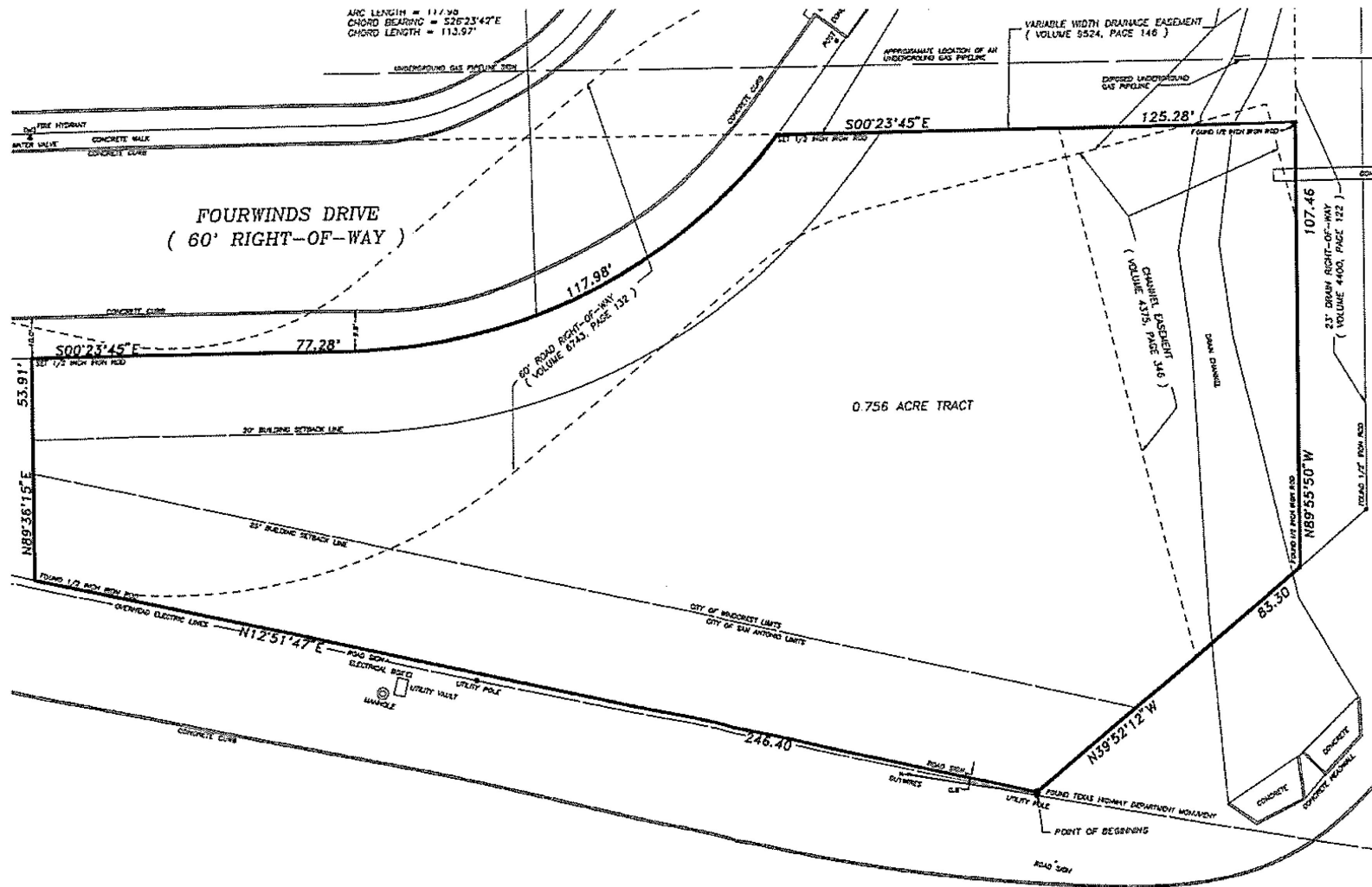
t 210.593.0777
f 210.593.0780

www.fulcrumsa.com

Marcus Shaffer
210.317.5563
marcus@fulcrumsa.com

fulcrum
PROPERTY GROUP INC

0.756 Acres Ground Lease/Build-to-Suit



0.756 Acres Ground Lease/Build-to-Suit

Location Aerial



10003 NW Military Hwy, Suite #2205
San Antonio, TX 78231

t 210.593.0777
f 210.593.0780

www.fulcrumsa.com

Marcus Shaffer
210.317.5563
marcus@fulcrumsa.com

fulcrum
PROPERTY GROUP INC