

Bulverde Marketplace

Mixed-Use Development in North San Antonio

Bulverde Road and Loop 1604



Bulverde Marketplace

Traffic Counts & Demographics

Project Highlights:

- +/- 70,000 SF of office and +/- 300,000 SF of retail and restaurant space
- New 330 urban style apartments
- New major thoroughfare with three signaled intersections and one mile of road frontage
- Pedestrian oriented development located on the new Bulverde Rd. parkway
- Internal private street with traffic circle and cross walks
- Extensive common areas, walkways and landscape
- State of the art grocery store (H.E.B. Grocery Co.)

Availability:

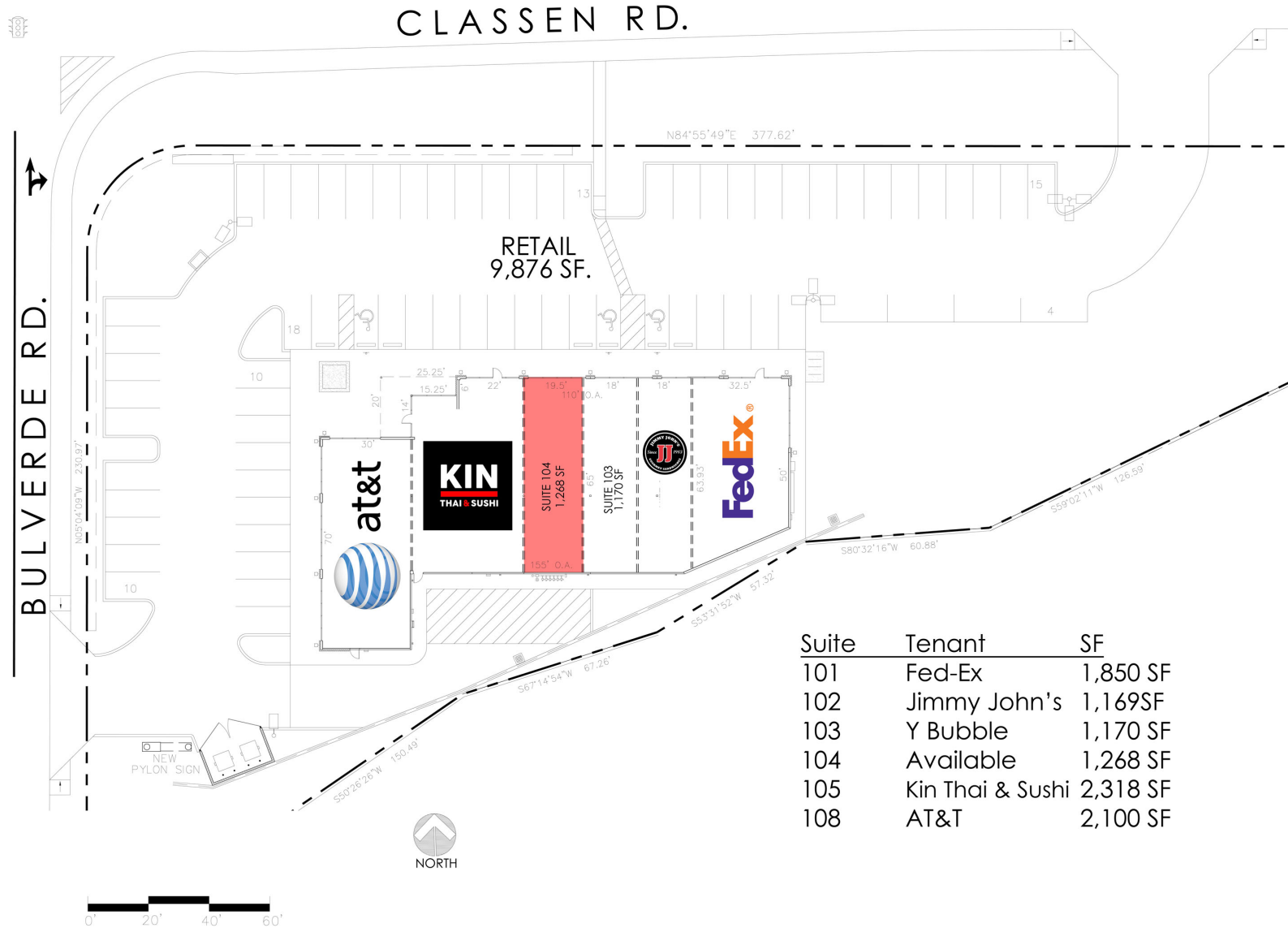
- Street retail and restaurant space
- Inline retail, office, & restaurant space
- Pad development
- Full Service Office

Traffic Counts:

- 92,500 VPD - Loop 1604
- 33,900 VPD - Bulverde Road

Demographics	1 mile	3 mile	5 mile
Population	6,859	88,642	189,681
Households	2,569	32,749	71,048
Avg HH Income	\$102,139	\$86,567	\$85,275





Suite	Tenant	SF
101	Fed-Ex	1,850 SF
102	Jimmy John's	1,169SF
103	Y Bubble	1,170 SF
104	Available	1,268 SF
105	Kin Thai & Sushi	2,318 SF
108	AT&T	2,100 SF