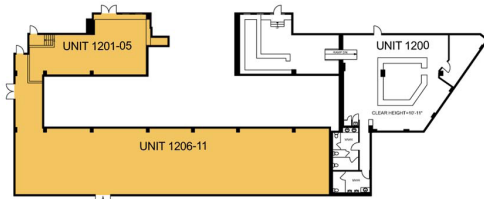
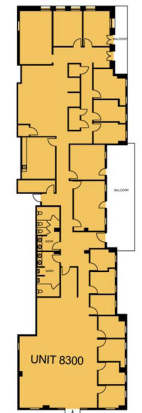




**FLOOR 01**



**FLOOR 02**



**FLOOR 03**

### Current Tenants

| Floor 1 |                         |          | Floor 2 |                 |          |
|---------|-------------------------|----------|---------|-----------------|----------|
| 7101    | Available Space         | 1,468 sf | 1200    | George's Keep   | 3,194 sf |
| 7103    | Emme Spa                | 1,590 sf | 1201-05 | Available Space | 958 sf   |
| 7110    | Sol Boutique            | 1,867 sf | 1206-11 | Available Space | 3,643 sf |
| 7114    | Piatti                  | 7,034 sf |         |                 |          |
| 7120-21 | Hotworx                 | 2,028 sf |         |                 |          |
| 1101    | Uni'ko                  | 1,270 sf |         |                 |          |
| 1105    | Available Space         | 5,621 sf |         |                 |          |
| 1107    | The Injection Room      | 3,000 sf |         |                 |          |
| 8110    | Ruth's Chris Steakhouse | 9,332 sf |         |                 |          |
| 8113    | Leasing Office          | 2,388 sf |         |                 |          |
| 8119    | Available Space         | 917 sf   |         |                 |          |
| 8122    | Available Space         | 1,341 sf |         |                 |          |
| 8123    | Cool Beans Cafe         | 876 sf   |         |                 |          |
| 8124    | Black Stallion Boxing   | 1,038 sf |         |                 |          |
|         |                         |          | Floor 3 |                 |          |
|         |                         |          | 8300    | Available Space | 6,040 sf |

