

608 & 602 Florida Street Shell Station and Adjacent Land on Florida Street



Size Available

- Building and Land with Paying Tenant

Features:

- XXXX
- High traffic area during daytime/events
- XXXX

Traffic Counts

- Florida Street, East of IH-37: 1,744 VPD
- Florida Street, West of IH-37: 4,353 VPD
- Hoefgen, South of Florida St: 843 VPD

Demographics	1 mile	3 mile	5 mile
Total Population	12,709	134,130	327,492
Total Households	5,052	50,734	118,953
Avg HH Income	\$68,782	\$56,986	\$60,474
Daytime Population	15,467	208,523	410,890

Area Retailers:



ALAMODOME



10003 NW Military Hwy, Suite #2205
San Antonio, TX 78231

t 210.593.0777
f 210.593.0780

www.fulcrumsa.com

Marcus Shaffer
210.317.5563
marcus@fulcrumsa.com

fulcrum
PROPERTY GROUP INC

608 & 602 Florida Street

Adjacent Land



10003 NW Military Hwy, Suite #2205
San Antonio, TX 78231

t 210.593.0777
f 210.593.0780

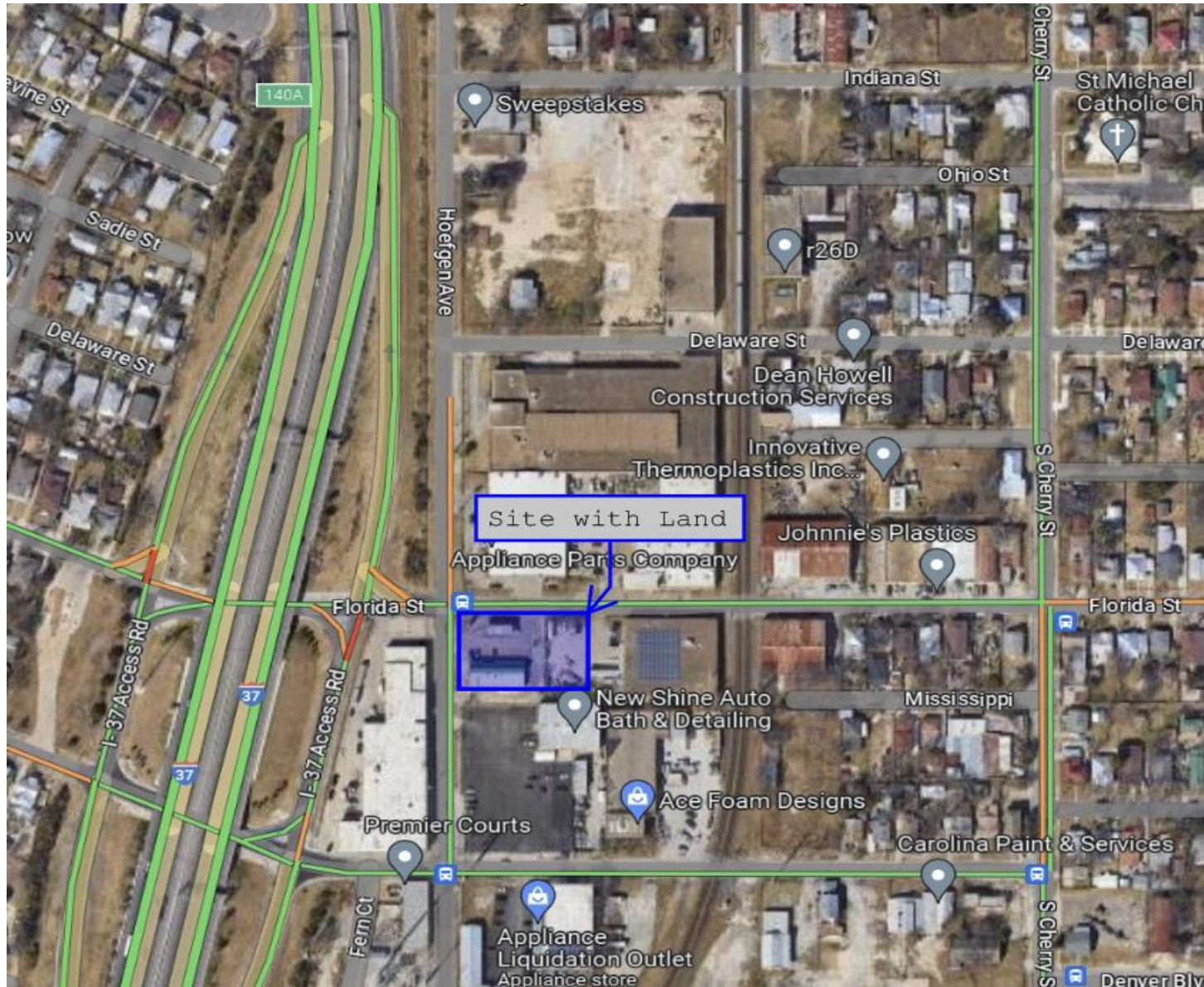
www.fulcrumsa.com

Marcus Shaffer
210.317.5563
marcus@fulcrumsa.com

fulcrum
PROPERTY GROUP INC

608 & 602 Florida Street

Location Aerial



10003 NW Military Hwy, Suite #2205
San Antonio, TX 78231

t 210.593.0777
f 210.593.0780

www.fulcrumsa.com

Marcus Shaffer
210.317.5563
marcus@fulcrumsa.com

fulcrum
PROPERTY GROUP INC